



CASSIA

THE RESIDENCES AT
CORAL GABLES

A1 RESIDENCE

1 Bedroom
1 Bathroom

Interior

686 SQ. SF. / 64 SQ. M²

Exterior

138 SQ. SF. / 13 SQ. M²

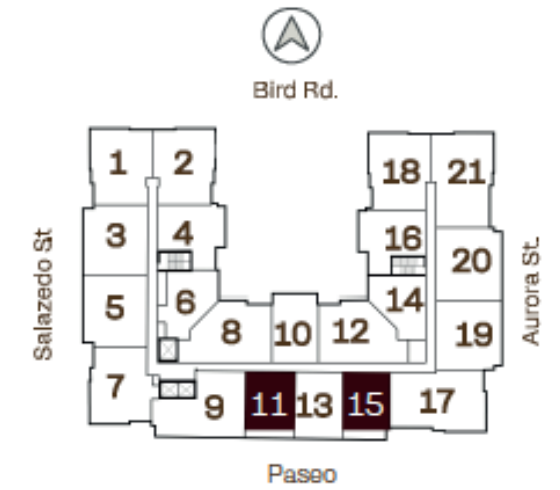
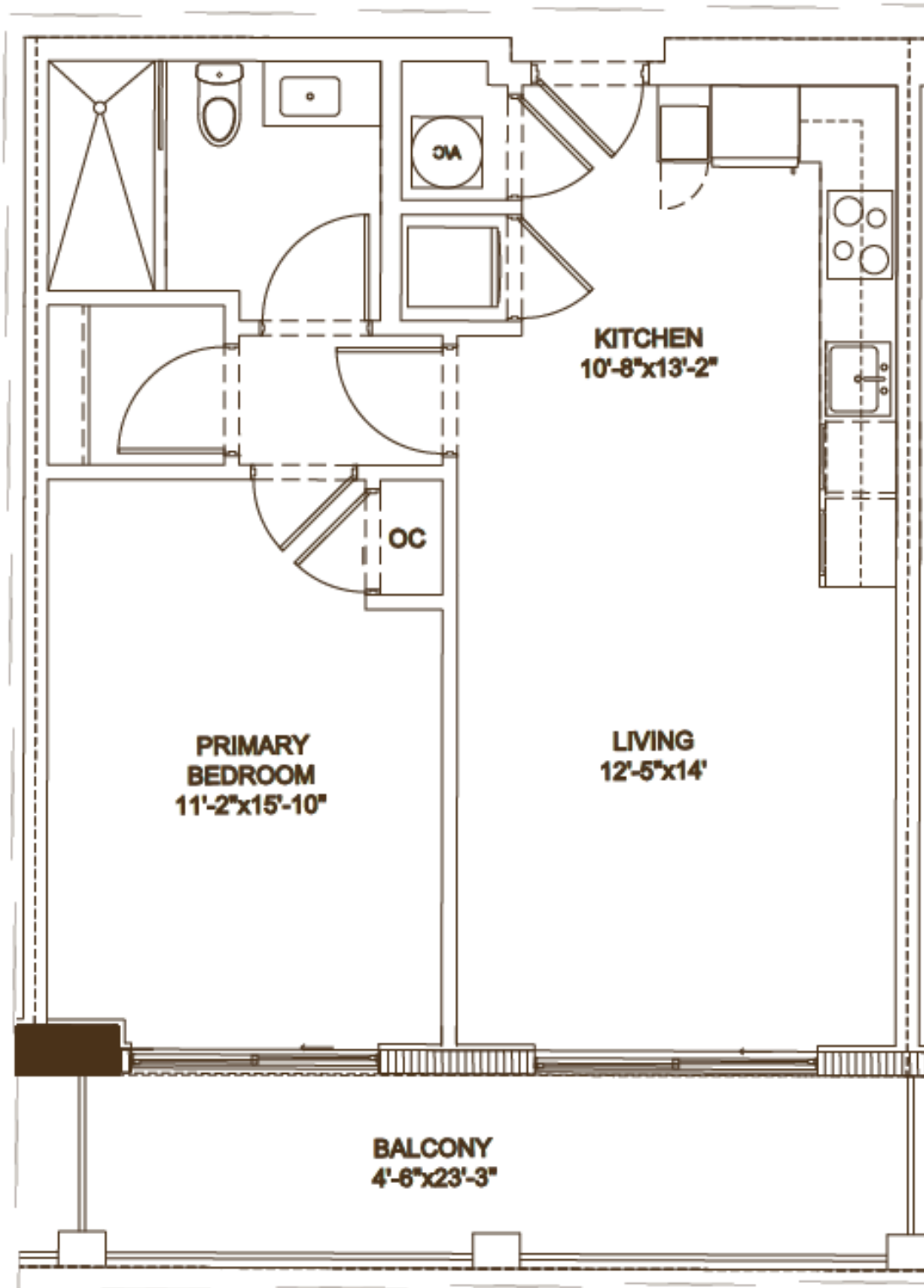
Total

824 SQ. SF. / 77 SQ. M²

Developed by



Sales & Marketing by



LINE 11 & 15
FLOORS 6-12



cassiamiami.com

ALL ILLUSTRATIONS ARE ARTISTIC CONCEPTUAL RENDERINGS AND ARE SUBJECT TO CHANGE WITHOUT NOTICE. ORAL REPRESENTATIONS CANNOT BE RELIED UPON AS CORRECTLY STATING REPRESENTATIONS OF THE DEVELOPER. FOR CORRECT REPRESENTATIONS, MAKE REFERENCE TO THE DOCUMENTS REQUIRED BY SECTION 718.503, FLORIDA STATUTES, TO BE FURNISHED BY A DEVELOPER TO A BUYER OR LESSEE. 4011 SALZEDO CONDOMINIUM DEVELOPED BY ALTA CORAL GABLES LLC. STATED DIMENSIONS ARE MEASURED TO THE EXTERIOR BOUNDARIES OF THE EXTERIOR WALLS AND THE CENTERLINE OF INTERIOR DEMISING WALLS AND IN FACT VARY FROM THE DIMENSIONS THAT WOULD BE DETERMINED BY USING THE DESCRIPTION AND DEFINITION OF THE "UNIT" SET FORTH IN THE DECLARATION (WHICH GENERALLY ONLY INCLUDES THE INTERIOR AIRSPACE BETWEEN THE PERIMETER WALLS AND EXCLUDES INTERIOR STRUCTURAL COMPONENTS). FOR YOUR REFERENCE, THE AREA OF THE UNIT, DETERMINED IN ACCORDANCE WITH THOSE DEFINED UNIT BOUNDARIES, IS SET FORTH ON EXHIBIT "3" TO THE DECLARATION. NOTE THAT MEASUREMENTS OF ROOMS SET FORTH ON THIS FLOOR PLAN ARE GENERALLY TAKEN AT THE GREATEST POINTS OF EACH GIVEN ROOM (AS IF THE ROOM WERE A PERFECT RECTANGLE), WITHOUT REGARD FOR ANY CUTOUTS. ACCORDINGLY, THE AREA OF THE ACTUAL ROOM WILL TYPICALLY BE SMALLER THAN THE PRODUCT OBTAINED BY MULTIPLYING THE STATED LENGTH TIMES WIDTH. ALL DIMENSIONS ARE APPROXIMATE AND MAY VARY WITH ACTUAL CONSTRUCTION, AND ALL FLOOR PLANS AND DEVELOPMENT PLANS ARE SUBJECT TO CHANGE. WITHOUT LIMITING THE FOREGOING, THE SIZE, DIMENSIONS AND LOCATIONS OF THE APPLIANCES AND SURROUNDING CABINETRY MAY BE MODIFIED, AND THE OVERALL LAYOUT OF THE KITCHEN MAY CHANGE FROM THAT WHICH IS DEPICTED HEREON.

Creative by Metrostudio.com